



# UTRF

UNIVERSITY OF TENNESSEE  
RESEARCH FOUNDATION

## Innovation Valley Technology Showcase

June 18, 2010



- Non-profit 501(c)3
- Technology transfer organization for UT system
- Drive ideas and discoveries from UT research into products and services that benefit society



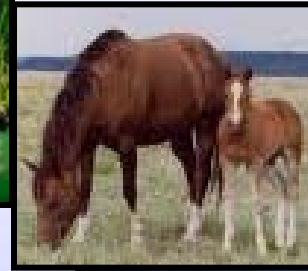
## Technology Transfer

1. Research growth
2. Intellectual property commercialization
3. Entrepreneurial culture
4. Economic development



# Engaging with UTRF

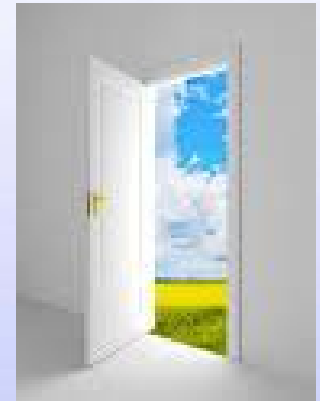
- Hundreds of active UT technologies
- Breadth of areas:
  - Plant science
  - Animal science
  - Engineering
  - Chemistry
  - Environmental biotechnology
  - Health sciences





# Engaging with UTRF

- Identify a problem
- We can help solve in a number of ways:
  - Direct research project with UT
  - R&D assistance through SBIR/STTR programs
  - Provide technology via a license
  - Assist in creation/growth of a new venture



- Nutraceutical additive for enhanced metabolic health
  - Nutraceutical Discoveries, Inc.
    - Start-up in Knoxville Technology Business Center
    - Research investments by large dairy organization
    - In discussions with a drink manufacturer



- Electronic health care records training tool
  - iCare Academic
    - Start-up in Knoxville
    - Implemented at UTK and several beta sites
    - Company has attracted interest of several educational software providers



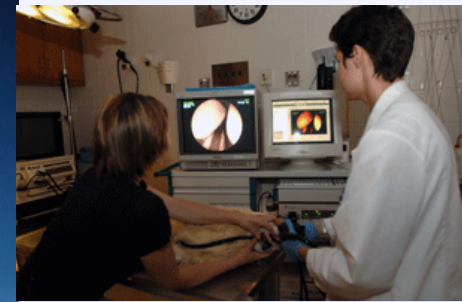
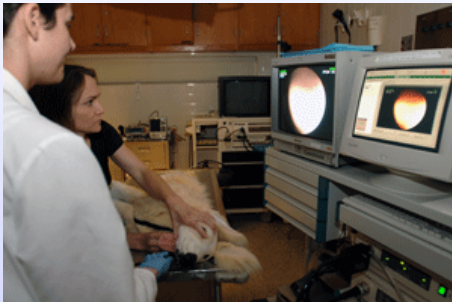


## The Problem

- Minimally-invasive endoscopic procedures are increasing in the veterinary world
- Extensive training required for proficiency
- Existing simulators are cost-prohibitive
- Training usually is performed on live animals
  - Limited number of tests per animal
  - Animals are expensive
  - Animals have to be euthanized at conclusion
  - Proficiency increases at the expense of your pets!

## The Solution

### Flexible and Rigid Endoscopic Training Device



- Increases proficiency of practitioners
  - More practice with less cost
  - Eliminates sacrificing of live animals
  - Reduces unwanted results for pet owners



## The Problem

- The nutritional content and flavor of food crops are often compromised in favor of increased plant durability and higher production yields



# Enhanced Phytonutrients Through Environmental Stressors

- Herbicides “turn on” metabolic pathways that result in increases in phytonutrients
- Application rate, timing and composition of the mix influence these nutritional enhancements
- Herbicide affect on nutrient enhancement is not always obvious



*Research • Commercialization • Venture Creation*

John A. Hopkins  
Vice President  
[jhop@utk.edu](mailto:jhop@utk.edu)  
865-974-1882



Joy Fisher  
Director of Marketing  
[joy.fisher@utk.edu](mailto:joy.fisher@utk.edu)  
865-974-0520



UT Conference Center  
600 Henley Street



<http://utrff.tennessee.edu>